

ABB LABELS ARTWORK SPECIFICATIONS



Label Size:

You can choose any size from our existing die library. A partial list of the existing dies available to you can be found in our catalog. You can always order any custom or special shape die as well.

Imported Images (Placed Arts):

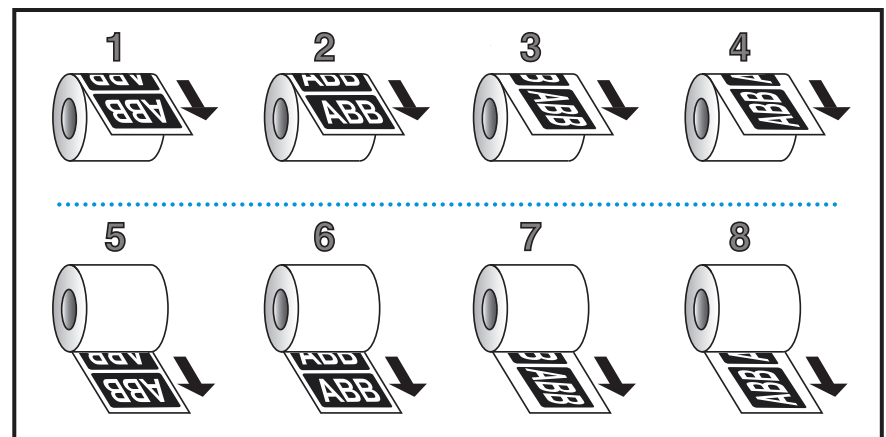
Please make sure all "placed art" are high resolution (minimum 300 dpi) and converted to CMYK before imported/placed in your layout. Save/send your artwork with all LINKED FILES EMBEDDED option checked. If imported/linked images are "not embedded", please provide them separately.

Lines/Rules:

All lines to be minimum 0.4 point. Reversed out (white) lines, to be minimum 0.8 point to avoid "filling in" when printing.

Wind or Unwind Direction:

All labels are produced with stringent quality standards for a smooth and easy application. For labels being automatically applied please specify label quantity per roll or maximum outside diameter (MOD) for your rolls. Also specify the roll unwind direction (std. LD3). See below for complete wind directions:



File Format:

Adobe Illustrator (.ai, .eps, .pdf)

Fonts:

All fonts should be converted and saved as an **outline**. If sending artworks with fonts "not converted to outline" please provide ALL the FONTS used in the layout.

Note: Please be sure to keep a copy of the original non-outlined artwork for any future editing.

Font Size:

Minimum printable font size for positive is 4 point
Minimum printable font size for reverse-out (white) types is 6 point.

Colors:

Colors should be specified as CMYK or Pantone PMS spot colors. Black text is preferred at 100% Solid black and not CMYK.